

ROCKS

Respect Originality Confidence Kindness Success

e tipu e rea in our children lies our future

Issue No 13

13 May 2021

DATES FOR YOUR CALENDAR

Sign Language Week	10-16 May
Parentlink Meeting 7.00 pm (tonight)	13 May
Whanake Trip to Te Papa	19 May
Board of Trustees Meeting	20 May
Bully Free NZ Week and Pink Shirt Day	17-21 May 21 May
Southern Zone Cross Country	24 May
Southern Zone Cross Country PP	31 May
BIGAIR Gym Rooms 4/5 12.30-1.30	3 June
Staff Only Day (professional learning) (no school)	4 June
Queens Birthday holiday	7 June
BIGAIR Gym Room 6/7 12.30 – 1.30	10 June
Interzone Cross Country	15 June
BIGAIR Gym Room 1/3 12.30 – 1.30	17 June
Board of Trustees Meeting 7.00 pm	23 June

EACH WEEK

Tuesday	Adult Exercise Classes (6.30 pm)
Wednesday	Ukulele 8.00 am Stream Team Code Camp (3.15 pm)
Thursday	Choir with Kath (lunchtime) ROCKS Run Club
Friday	ECO Stars with Ms Chamberlain (lunchtime)

TERM START DATES/NEW ENTRANT COHORT DATES 2021

Term 2: 3 May	mid-term date 8 June
Term 3: 28 July	mid-term date 30 August
Term 4 : 18 October	mid-term date 15 November

WHAKATAUKI

Te piko o te māhuri, tērā te tupu o te rākau

the way in which the young sapling is nurtured
(bent), determines how the tree will grow

FROM THE PRINCIPAL'S DESK

Hello, Talofa lava, Chao, Dia dhaoibh, Namaste, Gidday, Guten Tag, Assalamulaikum, Ciao, Salve, Ayubowan, Fakaalofa atu, Hola, Susaday, Bonjour, Ni Hao



Kia ora,

This week (10th-16th) is NZ Sign Language week. As a learning community we're taking the opportunity to learn some new vocabulary, refresh our skills, and incorporate sign into our learning programmes. A great place to start is to learn the signs that represent our ROCKS. These appear each week in our newsletter. Here's a homework challenge for the whanau - by the end of the term, see if your whole family can sign our 5 ROCKS.

Our learning programmes are well underway and this term our over-arching kaupapa of Tūrangawaewae-Our Place, Our Stories has a Science learning area focus. This will flow into our literacy programmes with the introduction/exploration of explanation writing, and into our visual arts focus of observational drawing. We are also learning about Soundscapes and as we head into the winter sports season we'll be developing our big ball skills. It's important that our students have warm clothes and a great winter jacket so that we can make the most of being outdoors. Please ensure all items are named.

Thank you to the kind person who put the netball hoops up in the court area. Our Saturday netball team is very grateful.

Over the past few weeks we have noticed repeated vandalism/graffiti on our boat. We know that our school grounds are visited after hours and in the weekends by the community at large. I would appreciate it if everyone could keep an eye out and report any suspicious behaviour to NZ Police ("105" non-emergency).

Next week is Bully Free NZ week (17-21st May). The teaching team will be making the most of the excellent resources available to ensure our children can identify what bullying is, and how best to stop bullying from happening. Next Friday 21st, Pink Shirt Day coincides with Bully Free NZ week so come to school wearing pink and -Kōrero mai, Kōrero atu, Mauri tū, Mauri ora-Speak up, Stand together, Stop bullying.

Whaea Julie has been busy creating our Positive Behaviour for Learning walls in our various learning spaces. Take a look in the Admin foyer or outside Room 5 to familiarise yourself with our ROCKS and our PB4L catch phrase - In the right place, at the right time, doing the right thing.

Ngā mihi,

Tineke and the team

THANKS

A big thank you for all the lovely feedback we have received regarding the recent "works" around school. The grass has started to pop through now so it will be wonderful to have this extra grassy area soon adjacent to the playground and also to have better overall visibility of the area. It has been a busy time for all concerned which has paid off. We have really appreciated all the positiveness.

WANTED

Contact details for a carpet layer. Do you know anyone who might be interested in installing fresh carpet into our Administration Office?

DOGS

We have lots of families with canine companions so here is our policy regarding dogs on the school site.

Dogs on School Grounds

Dogs are an important part of life for many Owhiro Bay School families, and are often included in activities such as walking children to and from school. The school appreciates this inclusion and values the place the dog has within a family. It also acknowledges that some people can find contact with dogs stressful, and even frightening.

Parents who bring dogs on to school grounds do so on the understanding that their dog has no issues around children, has never displayed any aggression towards children, and that the owner believes the dog is fully trustworthy in a school environment.

Owners bringing a dog or dogs on to the school grounds must follow the guidelines below.

Guidelines

- All dogs must be on a leash that keeps the dog reasonably close to the adult. The leash must be held by an adult.
- Dogs can be tied up for brief periods e.g. long enough to take a child to their class. The dog must be on a short leash and away from entry points so that people in the school grounds have a choice about whether they come into contact with the dog.
- If the dog is considered by the Council or any other authority to be a breed that needs muzzling, the dog must be muzzled on school property.
- Dogs are not allowed inside school buildings.
- Dog owners should help educate children about how best to approach their dog.
- Dogs are not allowed to drink from school water fountains.
- Owners must remove any mess left by their dog.

Stray dogs

Any stray dog at school will be reported to dog control and taken away so there is no danger to our students.

PARENTLINK

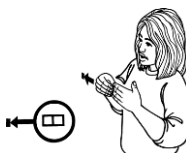
Parentlink Meeting Tonight - Thursday 13th May 7pm in the Staffroom.

Come along and join us to throw around ideas and plan for some fun events for the children and families for this term. We are also still on the hunt for a new Chairperson. If this sounds like you please talk to Vikki or Tineke or let us know at the meeting.

Hope to see you there.

ROCKS – RANGITIRATANGA

This week we have been talking about how we cope with disappointment.



PB4L – we are in the right place, at the right time, doing the right thing

Congratulations to Elliot S and Myah who won the ROCKS voucher last week for Open-Mindedness and Kotahitanga respectively.
Congratulations also to Room 1 for having the most ROCKS vouchers.

RA WHĀNAU KIA KOE

Best wishes to the following students who have birthdays coming up....

Kitana 13/5 today!!

Felix 16/5

Elkanah 18/5

HAPPY BIRTHDAY!

SPORTS SPOT

Netball

I'm so excited that it's our second netball game of the season this Saturday.

We have some new players from last year and I welcome Terena, Sienna, Adayah, Olivia, and Pippa, who join our players from last year Bella, Ruby T, and me.

We may have lost our first game last week, however we improved so much as we played. Come along and support us this Saturday at 1:10pm at EBIS. Thank you to all the parents who have volunteered their time and netball skills.

Elizabeth B.

Rocks Run Club

Last Thursday Run Club went on a mission up through Tawatawa Reserve. You would have thought the children to be shattered after Wednesday's school cross-country / fun-run. However, it was quite the opposite, they were bursting with energy and super happy!

Anyone with an active attitude is welcome to join in, Thursday's from 3pm-4pm (meet and collect at the boat). New members, please email your child's name, year and parent's mobile number(s) to Fiona Hayvice (mother of Y5, Spike) fjwhayvice@live.com.

UPCOMING EVENT - Xterra Wellington Trail Series

Next **Sunday 23 May** - Event #4 of the 2021 Xterra Wellington Trail series is being held at Whareroa Farm, Paekākāriki. The 7km Short Course is ideal for novices. One gentle climb reward you with magnificent views toward Kapiti Island. Then it's an easy return via horse tracks and through beautiful bush to the finish-line. You'll get your feet wet, but it'll be worth it!
Reduced Fee for Adults entering with a Child (**all U16 must be accompanied by an adult**). **Enter ONLINE** only, using code **XTERRACrew21**. All families are welcome.

For entry and full details - <https://xterrawellington.co.nz/events/> or email questions to Fiona, fjwhayvice@live.com.



Plastic Milk Bottles (and lids) needed!

Rufus Shoemack (year 2) has an idea to make a raft that can sail to Taputeranga Island out of milk bottles (which will be recycled when the raft is retired). So, we're looking for roughly 200 milk bottles! We'll leave a wooden bin in the reception area that you can drop your bottles (with lids on) into. And we promise to share photos of the adventure when it finally happens, and if it's safe we might even offer some free weekend rides!



PRIDE LANDS FUN HOLIDAY ADVENTURES

WINTER HOLIDAYS AT SOUTH WELLINGTON INTERMEDIATE SCHOOL (BERHAMPORE) ^{17-19 SEP} AND OTARI SCHOOL (WILTON)

12th – 23rd JULY 2021 from 7.00am-6pm daily. Interactive Activities and NO TV or Video Games, Kai Cubs Cooking, Keep Fit Karapu Fitness, and Life Skills Programme creating healthy Breakfast, Lunch and Afternoon Teas. One-on-one care and shuttle services available. Daily \$81.04/cub per session or \$137.77 for two siblings per session; Weekly: \$324.16 per cub/week or \$551.07 for two siblings/week. MSD Approved & WINZ subsidies are available for eligible families.

Please contact us: 0800 PRIDE 4 U Or Register online: www.PRIDELANDS.co.nz or Visit our Facebook page: www.Facebook.com/PrideLandsChildcare